

BONSAI TIMES



Official publication of the NZBA
www.bonsainz.com

Volume 12 Issue 03

July/August/September 2018



ISSN 1177-7761 (print)
ISSN 2537-8740 (online)



BONSAI TIMES

Brings you the inspiration, motivation and encouragement to create remarkable bonsai.



6 TONY BEBB WEEKEND IN HAMILTON

14 REPORT ON THE AABC CONVENTION 2018

21 MEGUMI WEEKEND IN DUNEDIN



24 A CHAT WITH WILL BADDELEY

28 CHRISTCHURCH 50TH ANNIVERSARY PROGRAMME



30 2019 NATIONAL CONVENTION

32 NEW ZEALAND BONSAI CLUBS DIRECTORY

COVER: Tony Bebb in deep contemplation at the Hamilton Bonsai Clubs July meeting during his recent trip to New Zealand.

COMMITTEE

Patron

Keith Lowe MNZM

President

Les Simpson
simmys@xtra.co.nz

Secretary

Lynn Slobbe
lynn.slobbe@xtra.co.nz

Treasurer

Carl Crosado
carlcrosado@gmail.com

Committee

Tony Bywater
Martin Walters
Kirsas Webb (editor)
Kelly O'Meara
John Costello

SUBSCRIPTIONS

Four issues a year posted to your home.
NZ\$20 (black and white)/NZ\$45 (colour)
Overseas add \$10/year for postage.

A digital copy of the previous issue of *Bonsai Times* will be available for subscribers to access online after the most recent issue is published.

Cheques payable to NZBA, post to:
Carl Crosado - Treasurer NZBA
27 Endeavour Street, North New Brighton
Christchurch 8083

Online banking: 03 0239 0025146 00
Please include your name/club as reference and advise the treasurer of your payment.

EDITORIAL

Enquiries and information:
Kirsas Webb (editor)
kirsas.j.webb@gmail.com
021 236 1126

SUBMISSIONS

Closing dates for submissions no later than 14 days before publication – mid February, May, August and November. All correspondence addressed to this magazine will be regarded as for publication unless clearly marked "NOT FOR PUBLICATION". No part of this magazine may be reproduced without the written permission of the publisher. *Bonsai Times* accepts no responsibility for the return of manuscripts or photographs.

Electronic submission is preferred. Text should be in either .doc or .pdf formats. Photographs should be submitted as 300 dpi .tiff, or high quality .jpeg files. Photographs should not be embedded in MS Word files.

Contact the editor if you have any queries.

ADVERTISEMENTS

Advertising space within *Bonsai Times* is available to purchase.

Full page adverts are \$100/year
Half page adverts are \$50/year

Contact Les Simpson (simmys@xtra.co.nz) or Kirsas Webb (kirsas.j.webb@gmail.com) for enquiries.

FROM THE PRESIDENT



Les Simpson

During the weekend of the 20-23 July, 11 people from New Zealand (four from Christchurch, one from Wellington, two from Bay of Plenty and four from Hamilton) attended the AABC National Bonsai Convention in Melbourne. This was a very good attendance and New Zealand were greater in numbers than one or two of the Australian states. In total about 250 Delegates attended. A report is given in this copy of the Bonsai Times about this convention.

One of the aspects I wished to zero in on is the Australian tutors (they prefer the word 'tutor' in preference to 'demonstrator'). At this convention they interviewed all of the tutors so the audience was able to get an idea of who these people were. AABC has a big say in the budget for the conventions. They are always scheduled to make a reasonable profit. This profit is largely spent on the visiting tutor programme, largely

to assist with travel. The use of tutors in Australia is more prolific than what is the case in New Zealand. We have recently set up a demonstrators subcommittee in New Zealand which was primarily set up to look at demonstrator training. One of the findings of this subcommittee was that demonstrators on the New Zealand demonstrators list are not getting many invitations to demonstrate, take workshops or do critiques. NZBA have a travel grant available to encourage clubs to invite demonstrators to their clubs. It has been very noticeable that there has been very little demand from clubs for the travel grant, with just one or two exceptions in recent years. The subcommittee has, therefore, made a number of suggestions to try and boost the number of invitations. Finally, it is up to the clubs, however, to request a demonstrator to come to their club and organise the application for the travel grant. I would urge all clubs to invite a demonstrator to your club. NZBA will be

posting an updated demonstrators list shortly on the NZBA website to assist you with this.

Whilst in Australia I was told that Australia will be hosting the World Bonsai Friendship Federation World Bonsai Convention in mid-October 2021 in Perth. This will be a big one with guests in numbers from many countries. They are expecting about 500 to attend. It will be a very special event with some of the best demonstrators selected from a number of different nations.

Just a reminder about two events looming in the very near future:

- Will Baddeley visit in October. Places are still available for you to attend in Auckland and Christchurch.
- The NZBA AGM this year will be a telephone conference scheduled for Saturday the 27 October at 7:30pm. Will your club be in attendance? If not please fill out the Delegate/Proxy form which permits another club to vote on your behalf. This will help us reach the quorum required. (Lynn has recently sent these forms to all clubs). If the quorum is not reached as per the rules the meeting can not proceed.

Les





TONY BEBB WEEKEND IN HAMILTON

By Les Simpson & Peter Mudie
Hamilton Bonsai Club

This article features Tony Bebb who was visiting the Hamilton Bonsai Club in July. During the visit Tony did a shohin workshop & critique, two-day weekend workshop as well as working on private collections.

Shohin Critique

Tony Bebb's shohin critique was held at the Cambridge Society of Arts Studio Rooms from 2 to 5:30pm on Saturday 7 July. At the conclusion of the session several who had attended had dinner together in a nearby Thai restaurant. This was a good time of the year to hold this event, as outside the

weather was not brilliant. We had a good attendance including Peter and Selwyn from Rotorua. Selwyn brought some pots to sell which were mostly suitable for potting shohin.

All participants were invited to bring several shohin to the meeting. Tony commenced the meeting by inviting everyone to produce one of their shohin for discussion. Before the meeting ended we all were invited to produce a second shohin for discussion. The shohin produced were in various stages of development, from those just beginning





the journey to those up to show standard.

Tony explained that we are challenged by the smaller size of shohin, delicacy of branches and intricacy of design to achieve a mature looking tree in a small pot. For newly-established shohin we were given tips as to how to thicken the trunks and how to keep internodes between branches to a minimum. Also how to develop root systems, pruning and thinning out so that light is received by the branches and foliage we want to encourage. Those that brought to the meeting shohin "up to show standard" also received good advice on how to make them better. Our aim should be to keep shohin to the stipulated height, but there are no "Shohin Police". They should fit in a pot which fits into the palm of your hand with fingers curled.

Tony has featured at a number of shohin events promoted by the Hamilton Bonsai Club. I have attended most but not all. It never ceases to amaze me the information he is able to impart at these events. I learn new stuff every time I attend. All that attended were very pleased. I would highly recommend that if you get the chance to attend one of Tony's shohin sessions you take the opportunity.

July Meeting

The monthly meeting was held at the club's new venue which is one of the rooms associated with the St Francis Church, Mansel Road, Hamilton. This we found to be a big improvement on our previous venue.

The meeting took the form of a critique. All members were requested to bring along two or three trees for Tony to comment on. There was certainly a variety as to what was produced at the meeting.

There were big ones, small ones, deciduous, evergreen, group and forest plantings and every style imaginable.

Tony spent a considerable amount of time at the start looking at trees with very little

or no bonsai training. A number of ideas were suggested including increasing the girth of the trees, keeping internodes small, pruning, soil mix and feeding the trees.

He then worked his way up the chain of development until he reached the show trees. All that brought trees received comments on at least one of their trees and some members received comments on two or three of their trees.





Weekend Worksop

Here we go again!

This year we have started a second series of workshops with our favourite artist from across the ditch. The first three-year programme proved to be very successful and using the old adage “If it isn’t broken—don’t fix it” it was decided we would run a second three-year programme.

Tony arrived at our old haunt of the Waikato Potter’s Society fresh from two weeks of private tuition (and only a couple of mornings off to recover) eagerly awaiting the arrival of our trees.

An assortment of trees were assembled on the large bench next to Tony’s working area, including pines, junipers, maples, redwoods, swamp cypress, hawthorn, lonicera to name but a few.

As usual we arranged for before and after photos to be taken (although a few club members snuck their trees in and out

without being caught on camera).

Unfortunately we were a bit light in the number of participants in this year’s workshops—but those who did come were not complaining as they had more time spent on their trees.

Several of the trees had major surgery and walked out of the door a lot lighter (and smaller) than when they came in. Others required the Big Boys (and Girls) toys to come in to play, with carving being done on a number of the trees.

As this was the first of three sessions with these trees it was important that the material reflected that and most of the trees had had a basic style applied in previous years and were now in a state where concentration on the development of the secondary and tertiary branch structure was the order of the day. That’s not to say that some of the trees did not undergo a major reconfiguration.





Going Private

You can only improve your bonsai by improving your knowledge and understanding of plant physiology, horticultural practices and the specific techniques used in training and shaping of bonsai trees.

One of the best ways of doing all three in one go is to use the services of, arguably, Australasia's best bonsai artist.

Valuable methods of gaining knowledge include critiques, demonstrations and public workshops, but by far the best method is a private workshop.

Since 2015 we, and several others in the club have availed ourselves of Tony's knowledge and experience in private sessions.

This has allowed us to work on and discuss our trees in more detail than at a general





workshop. It has also allowed us to spend more time on individual trees—who would allow Tony (and the owner) 6 hours to wire one tree at a weekend workshop?

Having Tony at our home has also allowed him to look through our trees and suggest work to be done on a tree we did not think about and suggest a pot we had on our shelving as being suitable for a tree we had just been working on.

As well as long spells of wiring, having Tony on hand has also allowed us to tackle larger jobs which we would have found difficult to do on our own or would have required too much effort to do at a normal workshop—such as carving....

..... or repotting a couple of olives.....

..... or redesigning a larch group.

Many of these discussions have extended into the evening where it is important to make sure the fridge is stocked with beer and that Indian takeaway is not on the menu!

In response to the question you're all thinking —yes it is more expensive than a workshop but you and your trees get so much more out of it that it is well worth it. So if you have the chance, (and Tony is in NZ quite frequently), then grab the opportunity with both hands.



REPORT ON THE AABC CONVENTION 2018

By Les Simpson
Hamilton Bonsai Club

During the weekend of the 20-23 July four of us from the Hamilton Bonsai Club (Marshall, Sandra, Melody & I) attended the AABC National Bonsai Convention in Melbourne. This was hosted by Bonsai Northwest in partnership with AABC. There were 11 in total from New Zealand (four from Christchurch, one from Wellington, two from BOP and four from Hamilton). This was a very good attendance and we were greater in numbers than one or two of the Australian States. In total about 250 Delegates attended. The convention was held at the Mantra Bell City.

Excitement started before we arrived. Two of our number had their flight cancelled and had to fly much later in the day than they intended. On arrival further excitement. We had all booked at the cheaper of the two hotels on offer. When we arrived there were no rooms left in the cheaper hotel so we ended up in the more expensive hotel for the same price with cheaper breakfasts also offered.

On the Friday there was a bus trip to visit

four bonsai nurseries including Bonsai Sensation, Bonsai Art, Garden World and the Chojo Feature Trees Gallery. Little did we know that the best sales of tools, pots and other bonsai paraphernalia would come from the nursery tour. We were a little disappointed in the vendor sales at the convention. Fortunately we woke up to the splendour before our eyes on





the nursery tour and purchased pots and equipment. The trees for sale were also magnificent including a full range of Satsuki Azalea at one of the nurseries.

The opening talk "Breaking The Mould" was delivered by Michael Simonetto. Michael commenced Bonsai in 1990. He was very much influenced by Japanese styling but in recent years has taken a very intensive interest in how trees grow in nature. He showed pictures of stylised, plastic looking, manicured bonsai and compared these with details of how trees actually grow in nature. He is now an exponent of attempting to replicate how trees grow in nature. He had plenty of quotable quotes

such as your "greatest enemies are haste and desire. Wiring can be a blessing or a curse". He emphasised that doing bonsai was always about enjoying the journey.

The feature demonstrator at the convention was Bjorn Bjorholm. He was excellent and just as good as the performance he gave at our Dunedin convention in 2017. On the Saturday Bjorn worked on two trees fashioned from raw material in an informal upright style; the first being a Japanese Black Pine and the second a Japanese White Pine. Bjorn always amazes me as to how his hands can move flat out styling the tree while at the same time talking flat out and answering

questions. He was able to impart many useful tips. Joe Morgan Payler assisted Bjorn with his two trees. Joe grew up in a rural area in Victoria, Australia. He has spent some time in Japan studying bonsai. In the afternoon Joe presented a Scots Pine that had been previously worked on by Joe and friends. Joe had owned the tree for about three years. It had previously been styled as a windswept, which Joe did not like, so he changed it to an informal upright style. Last thing on the Saturday the two trees styled by Bjorn were auctioned the black pine selling for \$1450 and the White Pine \$600.

On both the Saturday and Sunday some

emphasis was placed on the Visiting Tutor Programme. All of the tutors were interviewed on stage during the convention, which enabled convention delegates to assess the capabilities and strengths of all the tutors. They have some very good tutors available. Only three New Zealand clubs are currently members of AABC, namely Hamilton, Christchurch and Otago. Hamilton Bonsai Club pays the sub of A\$40 each year and has invited an Australian tutor to visit every year for about the last 8-10 years. Hamilton BC has received a payment of A\$400 each year from AABC towards airfares. If you are making use of their tutors this is very good value. AABC make a profit from





the conventions to assist funding of the Visiting Tutor Programme.

The AABC AGM was held from 5pm to 6pm Saturday night. I attended this meeting.

Melody and I attended the dinner on Saturday night. This featured three trivia quizzes. There were also three awards for the best tree in show. Bjorn selected one on behalf of AABCI, another was selected by Glenis Bebb on behalf of BCI and a third one selected by Lindsay Bebb on behalf of WBBF. Bjorn and Glenis selected the same tree whilst Lindsay selected a different one which, surprise surprise, was from the same stable as the first one and developed by the same bonsai artist. Both trees were deciduous trees in winter silhouettes with

incredible ramification and refinement.

Sunday morning first thing Sandra attended the critique for trees in the show.

Bjorn was again demonstrating on Sunday. The two trees selected were a Shimpaku Juniper and Black Pine. The last demonstrating slot in the afternoon was taken by Hanh Tran who has developed an unusual procedure for producing bonsai. He presented several black pine with a trunk that was thin and narrow say up to a metre long. Needles were only left at the very end. The trunks were heavily wired over raffia. He then shaped the trunk into a series of irregular shaped coils to produce a tree that looked not too bad. As it was a black pine back budding was





not a problem. One of his trees was sold at auction for \$250

Bjorn's trees, produced on the Sunday, were also sold at auction. The Shimpaku fetched \$850 and the Black Pine \$1700.

Sandra and Marshall attended the Monday Workshops.

The convention was well run and very enjoyable. The food was very good as was the venue.

The next AABC national Bonsai Convention is also in Melbourne 17-20 May 2019 and is called "Australian Natives: Breaking Through the Bonsai Ceiling". It will be held at the same venue as the 2018 convention i.e. Mantra Bell City, Melbourne. The

headline demonstrator will be Ryan Neil from the USA.

Australia will be hosting the World Bonsai Convention in mid-October 2021 in Perth (World Bonsai Friendship Federation). This will be a big one with guests in numbers from many countries. It will be a very special event with some of the best demonstrators selected from a number of different nations. There will be add-on tours available.





MEGUMI WEEKEND IN DUNEDIN

By Pete Dulgarr
Otago Bonsai Society

The Otago Bonsai Society hosted Sydney-based instructor Megumi Bennett for a weekend of demonstrations and workshops from September 14th-17th. After arriving in Australia in 1974, Megumi continued to develop the bonsai and ikebana skills she had learned growing up in Japan. In 1999 she founded the Bonsai Society of Sydney and is also a member of the Nippon Bonsai Association

and Ikebana International. She has given demonstrations, exhibitions, and workshops throughout Australia. Her first solo exhibition took place at the Japan Foundation Sydney in 1997. She received the bonsai instructor qualification from the Nippon Bonsai Association in 2008, the first person outside Japan to receive this recognition.



Megumi began her Dunedin visit with a Saturday morning demonstration, transforming a sprawling nursery-stock Scots Pine (*Pinus sylvestris*) into a sparse windswept-style tree. Three workshops held over that afternoon and the next day saw techniques ranging from grafting a long bare juniper branch to air layering a pair of Australian Wollemi Pine (*Wollemia nobilis*) to some extreme branch bending using raffia, heavy wire and a stout wooden bar. An added highlight to the busy weekend was having Fiona Burgess' beautiful pots for sale. They practically sold themselves while Fiona attended the demo and first workshop, and a couple of smaller pots found their way back to Australia with Megumi.

The formal part of the visit ended with a fantastic Sunday dinner at the new Emerson's Taproom for Megumi and the OBS committee. On her final day in town, Megumi found time to down her bonsai tools and do a bit of touring around Dunedin with club members.







A CHAT WITH WILL BADDELEY

By Martin Walters
Auckland Bonsai Society

In late October the NZBA is hosting Will Baddeley for a series of workshops throughout New Zealand. This event has been a long time in planning and was started with Will as a back-up presenter instead of Peter Warren at the Auckland Convention. During that time, regular correspondence and a friendship has formed and we are delighted to bring Will over for his legendary carving workshops.

In this article Martin chats with Will about his forthcoming visit and what we can expect.

Most people seem to know you as a bonsai carving specialist, but your bonsai knowledge seems to go a lot deeper, did the love of carving come before the love of trees?

Yes, my love for trees goes back to when I was a child. I was born and raised in London, so other than parkland, my exposure to nature was limited to a degree. During the school holidays we would often visit my mother's family in Suffolk. My gran rented a cottage on a sheep farm there and I spent a lot of that



time with the farmer in the meadows and woods. We ended up moving to Suffolk when my parents divorced and when I finished school I became a roof thatcher. I was then working in woods, partly to coppice the materials I needed for work, and when bonsai became my hobby, my work in several of the local counties became my hunting ground for good material. Hedges, woods and my customers gardens. The carving came later as lowland Suffolk didn't have the kind of yamadori the highlands offer, so trunk chops or branch removal needed some mechanical intervention. I lived close to Kevin Willson who inspired me to teach myself the techniques I needed.

MI've seen some beautiful trees that you have worked on with carving and your styling; with a workshop based on carving is it a different approach than any normal styling a tree demonstration?

WWith my carving workshops I tend to help people learn how to use the power tools and cutters themselves. Under guidance of course. For me to sit and carve while others just watch teaches them little. Getting a feel for the tools, cutters and the right approach seems to work very well indeed. I do step in if someone is struggling.



MWith your recent travels, how does the American style differ from the UK?

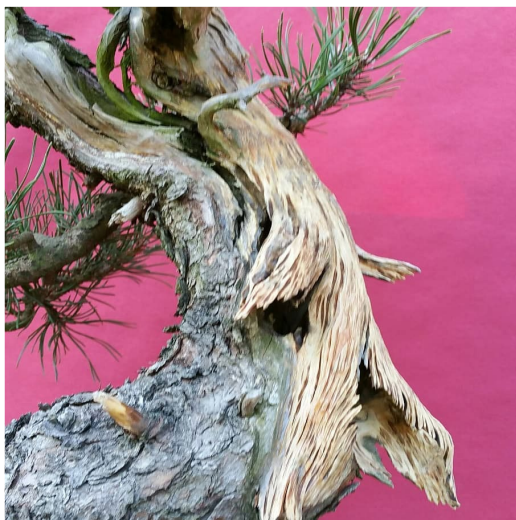
WI don't see a great deal of difference wherever I go really. There are many levels in bonsai cultivation, from the sticks in pots people, right up to those that invest heavily on imported or top quality yamadori. If all glean the same enjoyment from bonsai then that's what it's all about. The US has taken off in recent times with a lot more native material being used and with home-grown and global travelling artists, some fantastic trees are being created. The UK doesn't have the kind of material that North America or Europe has to offer so it's either be more creative on lesser material or purchase from mainland Europe.

MIn New Zealand we are a young country in the bonsai world, but do you think being isolated from a lot of the more prominent countries in bonsai will help us form our own identity?

WIf the passion and push is there then very much so! Being a young country in bonsai terms and with the wealth of knowledge and teachers at the click of a button, the mistakes or wrong practice that the 'older' bonsai countries made through the lack of the right information can be avoided.

MWith the prominence of online information, forums, videos and blogs do you think at times there is too much information and the correct methods and facts get lost?





WYes I do think that. If you are a beginner it's a minefield! Finding someone with good trees and lots of time in bonsai is important but even then some people I respected and listened to 20 years ago are no longer on my radar. Tastes and methods develop all the time. That's the nature of progression.

MFor people attending your workshop, what's the best piece of material they can bring you? and your favourite to work on?

WThe best pieces to work on and learn the most from are smaller details. A branch chop, for instance, rather than a huge stump. It's the same process but much easier to use the full range of tools rather than bulk carving all day

MI see a lot of new die grinders and Dremel machines out now. What's

your weapon of choice and why?

WThe old fashioned Makita 906 for big work and the 4000 Dremel for intermediate and small details. The 906 is more lightweight than more modern models and more comfortable to hold when working for a long time. It has a wine bottle shape that allows good access internally. The 4000 Dremel is a more heavy duty model than most and can be a good crossover tool between die grinder and smaller Dremel types.

MWhat can New Zealand expect in a Will Baddeley workshop?

WI hope that everyone takes something away from the workshop. That confidence, technique and thought processes are grasped but most of all for everyone to enjoy themselves. Not to go away and carve everything within an inch of its life either!!



Christchurch Bonsai Society
invite you to join their 50th
anniversary celebration



A weekend with Will Baddeley

Join us for a weekend of classes, demos and workshops with Will Baddeley on the weekend of 12th to 14th October 2018 at the Redwood Convention Ctr, 340 Main North Rd, Christchurch

Will Baddeley is a rising star of the European Bonsai scene. He is an exceptional bonsai stylist with a passion for European native species and has brought this passion into styling and creating very natural Bonsai. He has an enviable reputation for carving and deadwood creation techniques including creating natural looking deadwood on deciduous trees. He has exhibited trees at the Ginkgo Awards, Noelanders, Best of British, and Joy of Bonsai. Two of his trees are on the register of Important British Bonsai



For more information contact your club secretary or
chchbonsai@gmail.com

Will Baddeley Weekend: Programme

Welcome to Christchurch!

Friday 12th

Bain's Garage, 6 Watermill Blvd, Northwood

- 9.00 -12.30 Workshop, maximum 8 participants, 3 observers
- 12.30 -1.30 Lunch (BYO)
- 1.30 – 5.00 Workshop, maximum 8 participants, 3 observers

Saturday 13th

50th Anniversary Convention, Bonsai exhibition and trade show; Redwood Convention Ctr, 340 Main North Rd

Convention:

- 8.15 Registration
- 8.45 Welcome and Introductions
- 9.00 -12.30 Demonstration 1 Will Baddeley
- 12.30 -1.30 Lunch
- 1.30 – 4.30 Demonstration 2 Will Baddeley
- 4.30 – 5.00 Raffle draw, thanks and close

Bonsai exhibition and trade show:

- 9.00 – 5.00 Open to public

50th Anniversary Reception:

- 6.00 – 9.00 Reception with finger food and cash bar

Sunday 14th

Bonsai exhibition and trade show:

- 9.00 – 5.00 Open to public

Class/workshop; Bain's Garage:

- 9.00 -12.30 Carving demo/class, maximum 18 people
- 12.30 -1.30 Lunch (BYO)
- 1.30 – 5.00 Workshop, maximum 8 participants, 3 observers

To register contact your club secretary or chchbonsai@gmail.com

NEW ZEALAND BONSAI CONVENTION 2019

HAMILTON – 11TH TO 13TH
OCTOBER 2019



Hamilton Bonsai Club

in association with the New Zealand Bonsai Association

presents

SUTHIN SUKOSOLVISIT



Born in Thailand, Suthin has extensive experience with tropical bonsai, Japanese maple, Juniper, Azalea, Black Pine and many other species.

Suthin has won multiple National Bonsai Awards in Thailand and the United States. His latest award being the National Award at the 2018 US National Bonsai Exhibition where he also presented a critique on some of the trees.

As well as demonstrations and talks by Suthin, some of our own NZ demonstrators will be there to enlighten you.

Trade stands will be there for all your bonsai needs.

The Exhibition will not only feature the NZBA National show, but also displays from the Hamilton, Rotorua and Bay of Plenty Bonsai clubs, making it (probably) the largest ever display of bonsai trees in New Zealand.

Fern Valley Bonsai Nursery

We are growers of field grown bonsai, providing bonsai artists with thicker trunks as a good foundation for future bonsai.

We have maples, elms, swamp cypress, hornbeams, ficus, hackberries, and white olives in stock. We also have stock established in timber growing boxes.

Pay us a visit in Tauranga or we can courier too.

Contact: Adriaan and Poppie

Tel. 07-552 4900

E-mail: engelbrecht@xtra.co.nz

Visit us on Facebook or our website



CLUBS

Auckland Bonsai Society
President: Martin Walters.....(021) 629 192
aucklandbonsaisociety@gmail.com
Secretary: Peter Simpson
Meetings: 2nd Thursday 7:30 pm,
Auckland Horticultural Council, 900 Great
North Road, Western Springs, Auckland.

Avon Bonsai Society
President: Kees De Jager
Kees.dejager162@gmail.com
Secretary: Alison McIntosh
alisonmc99@gmail.com
45 Clariges Road, Bishopdale,
Christchurch.
Meetings: 1st Wednesday 7:30 pm,
Isleworth School, Farrington Avenue,
Bishopdale, Christchurch.

Bay of Plenty Bonsai Society
President: John Vercoe
jvercoe@xtra.co.nz
Secretary: Sue Vercoe(07) 572 4345
Meetings: last Sunday

Blenheim Bonsai Group
John Simpson.....0294783464
Rod Wegener 021755100
Ainsley Vincent 03 5728335
Meetings: 2nd Sunday, 1:00 pm
Selmes Nursery, 141 Battys Road,
Springlands, Blenheim

Bonsai Study Group
Bob Langholm(09) 629 3362
bob-si@ihug.co.nz
41 Taumata Road, Mt Albert, Auckland

Christchurch Bonsai Society
President: Wendy Gibbs(03) 981 8594
Secretary: Helen Bain
chchbonsai@yahoo.com
6 Watermill Boulevard, Northwood,
Christchurch
Meetings: 2nd Wednesday, 7:30 pm,
Cotswold Preschool, Colesbury Street,
Bishopdale, Christchurch.

Eastern Bay of Plenty Bonsai School
President: Sam Brierley.....(07) 307 8483
eudaimoniabonsai@gmail.com
18 Rambler Drive, Whakatane
Meetings: 1st Sunday pm, phone for
details.

Franklin Bonsai Club
Gerry Boy.....(021) 0236 1499
gerry2013@yahoo.co.nz
Meetings: 2nd Saturday, various locations

Gisborne
Heather Deere.....(06) 868 9519
tetia@slingshot.co.nz

Gore Bonsai Society
President: Fionna Burgess .(027) 715 1557
Secretary: Lisa Anderson.....(03) 207 1856
beak.lisa@gmail.com
Meetings: 3rd Saturday or Sunday after
Phone for details of time and venue.

Hamilton Bonsai Club
Presidents: Marshall and Melody
marshallgray2009@hotmail.com
Secretary: Gordon Bowers...(07) 868 6787
PO Box 879, Cambridge, 3450
Meetings: 2nd Sunday 2.00pm, St Francis
Church Hall. 92 Mansel Ave, Hamilton

Hawkes Bay Bonsai Society
President: Damian Pipe.....027 931 3527
Secretary: Ian Sayer(06) 843 4717
iansayer@xtra.co.nz
Meetings: 2nd Wednesday, 7:30pm, Clive
Community Church Hall, Napier

Matamata Bonsai Club
President: Graeme Hancock
kaimaigc@gmail.com
Kaimai View Garden Centre, State
Highway 27, Matamata.
Meetings by arrangement, contact
Graeme.

Manawatu Bonsai
President: Greg Tuthill
manawatubonsai@gmail.com
Meetings: 3rd Tuesday, 7:00 pm,
PN Community Leisure Centre, 569
Fergusson Street, Palmerston North.

Nelson Bonsai Club

President: Nigel Sutton

nigel.sutton@ihug.co.nz

11 Torlesse Street, Wakatu, Stoke, Nelson.

Meetings: 1st Monday, 7:30 pm, members house (Apr to Aug); Stoke Garden and Landscape, Saxton Road (Sept to Mar).

New Plymouth Bonsai Club Inc.

President: Paul Urbahn.....(06) 758 6995

paulurbahn@xtra.co.nz

Meetings: 2nd Thursday, 7pm, last Sunday, 2:00 pm, The Royal New Zealand Foundation for the Blind, 131 Vivian Street, New Plymouth.

Otago Bonsai Society

President: Pete Dular(021) 105 2339

Secretary: Lynn Slobbe

lynn.slobbe@xtra.co.nz

325 Kenmure Road, Kenmure, Dunedin

Meetings: 1st Tuesday, 7:30 pm, Mercy Hall 42 Macandrew Road, South Dunedin, Dunedin.

Rotorua Bonsai Club

President: Jocelyn Van Raalte (07)3493306

Secretary: Rick Merrington....(07) 3474065

rick@gargoyles.co.nz

Meetings: 2nd Sunday, phone for details

South Canterbury Bonsai Society

President: Brian Blackwell(03) 615 8775

Secretary: Alyson Guthrie(03) 684 5363

wayne-mc2@xtra.co.nz

Meetings: 1st Wednesday (February to November), 7:30pm, Arts Centre, Gleniti Road, Timaru.

Wellington Bonsai Club

President: Bevan Hussey

Secretary: Sue Parker

PO Box 30-621, Lower Hut 5040

wellington.bonsai@gmail.com

Meetings: 1st Sunday (except January), 1:00 pm, Hutt Valley Tramping Club rooms, Birch Street Reserve, Waterloo, Lower Hutt.

ROBERT LANGHOLM

FREELANCE TEACHER AND DEMONSTRATOR
OF ALL ASPECTS OF BONSAI

-Beginners to advanced-

Over 40 years experience in agriculture, horticulture and bonsai

New Zealand's top private bonsai garden
Bus tours and private visits by appointment

Robert (Bob) Langholm QSM

41 Taumata Road,

Mt Albert, Auckland

phone (09) 629 3662 or 027 286 3321

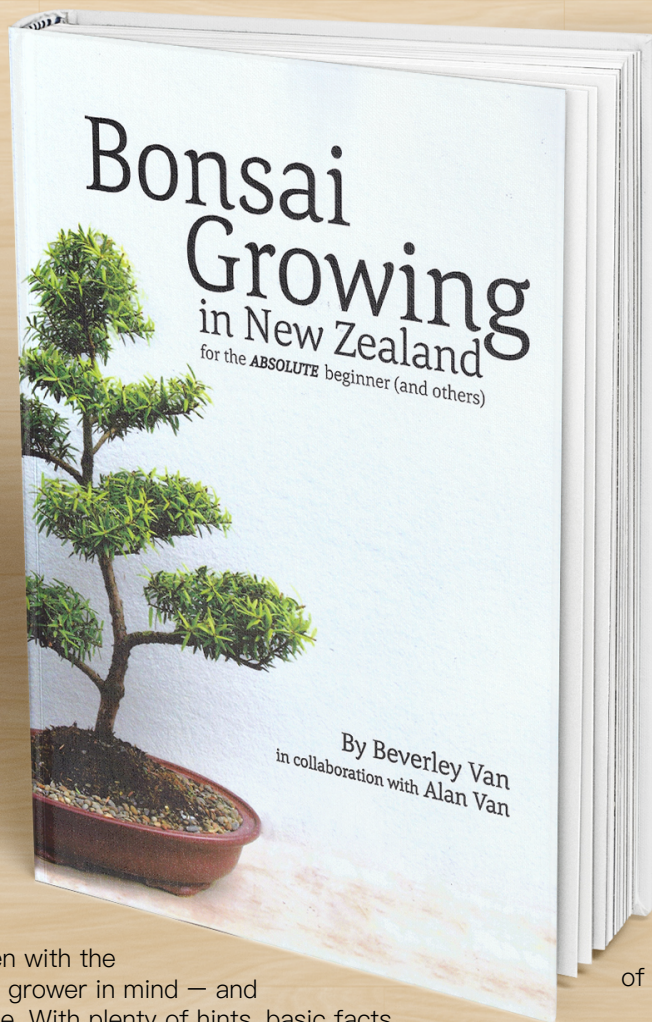
bob-si@ihug.co.nz



Bonsai Growing in New Zealand

By Beverley Van

in collaboration with Alan Van



This new book has been written with the new-to-bonsai grower in mind — and others of course. With plenty of hints, basic facts, case histories, and plenty of illustrations, this book also explains how some of the author's own bonsai were created. Written for all New Zealand enthusiasts but especially for those about to start growing bonsai, this is going to be the perfect addition to everyone's bonsai library.

170 pages
of text and photos.

Price \$49.95 (plus
\$6.50 postage)

For further information on how
to obtain this first ever New
Zealand bonsai book, email
vanzsai@xtra.co.nz

BONSAI

Bonsai • Bonsai pots • Plants suitable for Bonsai

*Creating living landscapes...
...whether it's miniature or mature, be inspired!*



KAIMAI **Garden Centre** **MATAMATA**

**SH27 – on the northern boundary of Matamata township
Open 7 days 9am to 5.15pm • Toilets – Easy parking**

AUCKLAND BONSAI SOCIETY



MONTHLY MEETINGS

INTERNATIONAL DEMONSTRATORS

- YAMADORI HUNTING

- TREE STYLING SERVICE

CONTACT : AUCKLAND CLUB PRESEDENT
MARTIN WALTERS ON 0216 29192

OR EMAIL:

AUCKLANDBONSAISOCIETY@GMAIL.COM